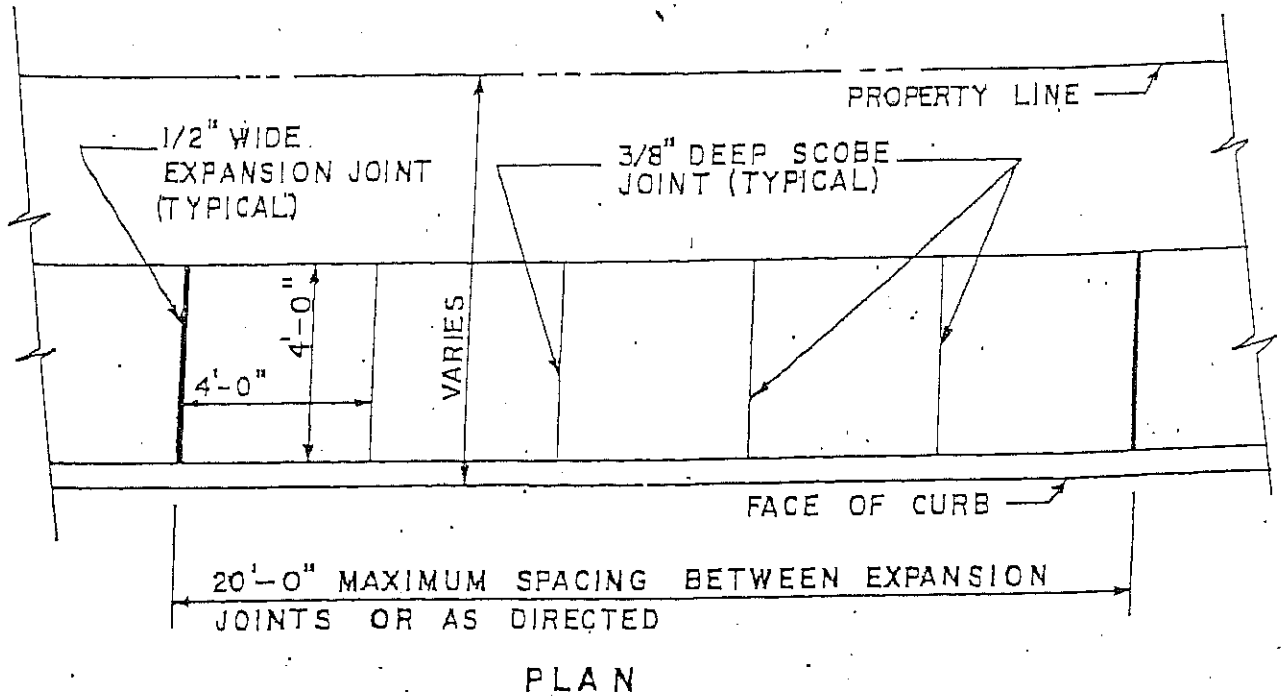
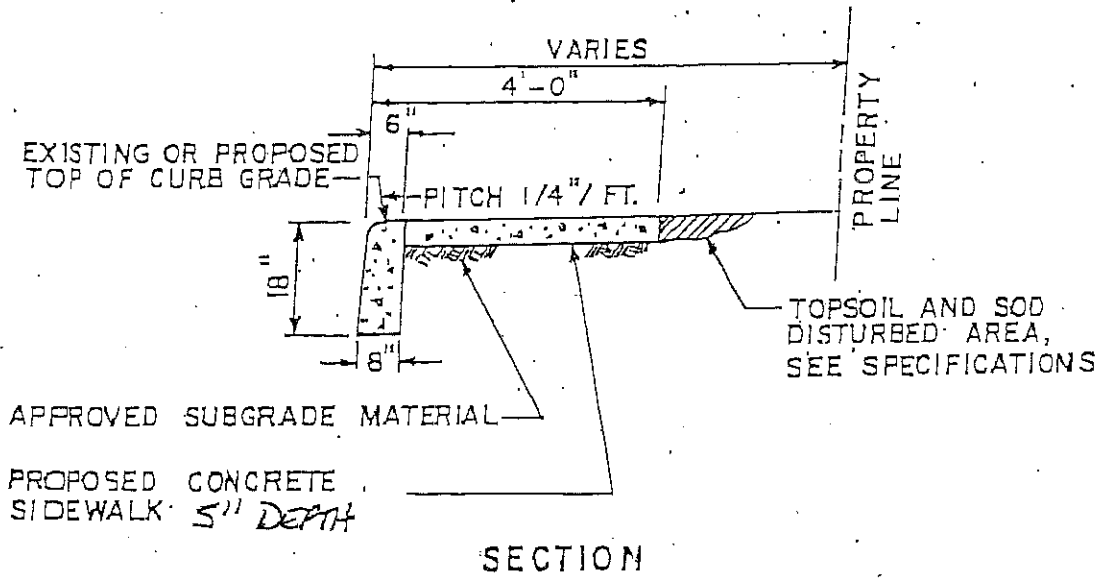


Incorporated Village of Mineola
Department of Public Works

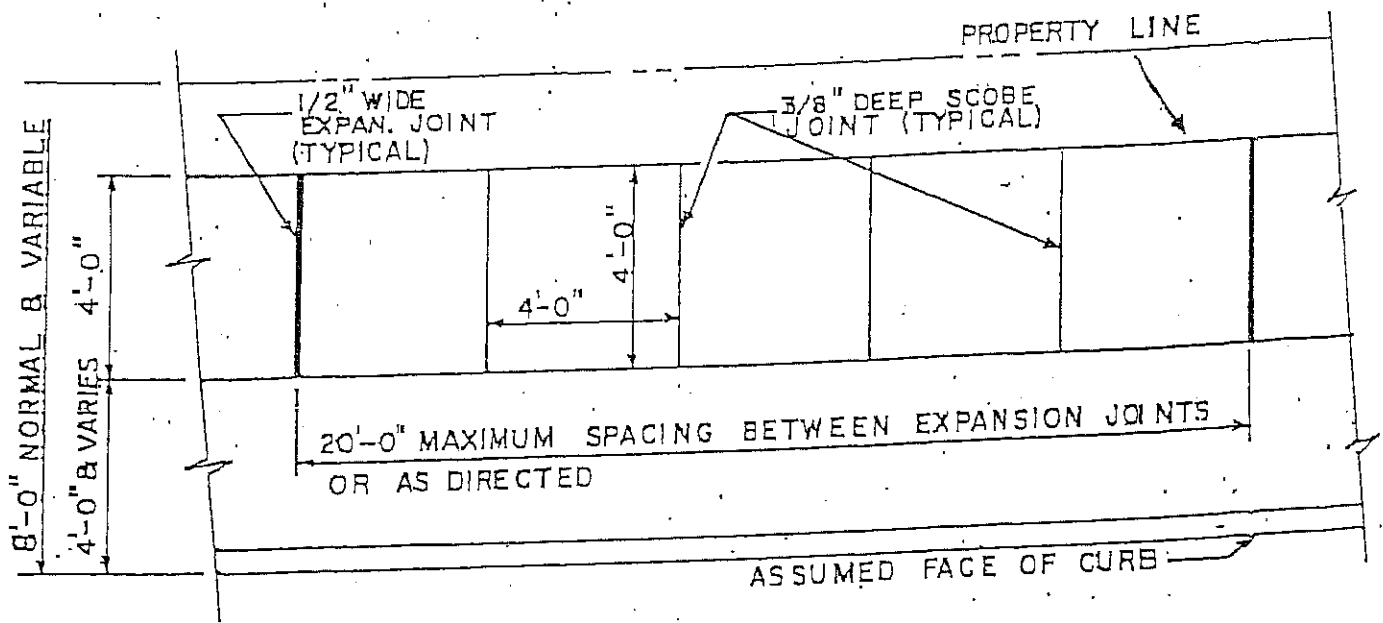
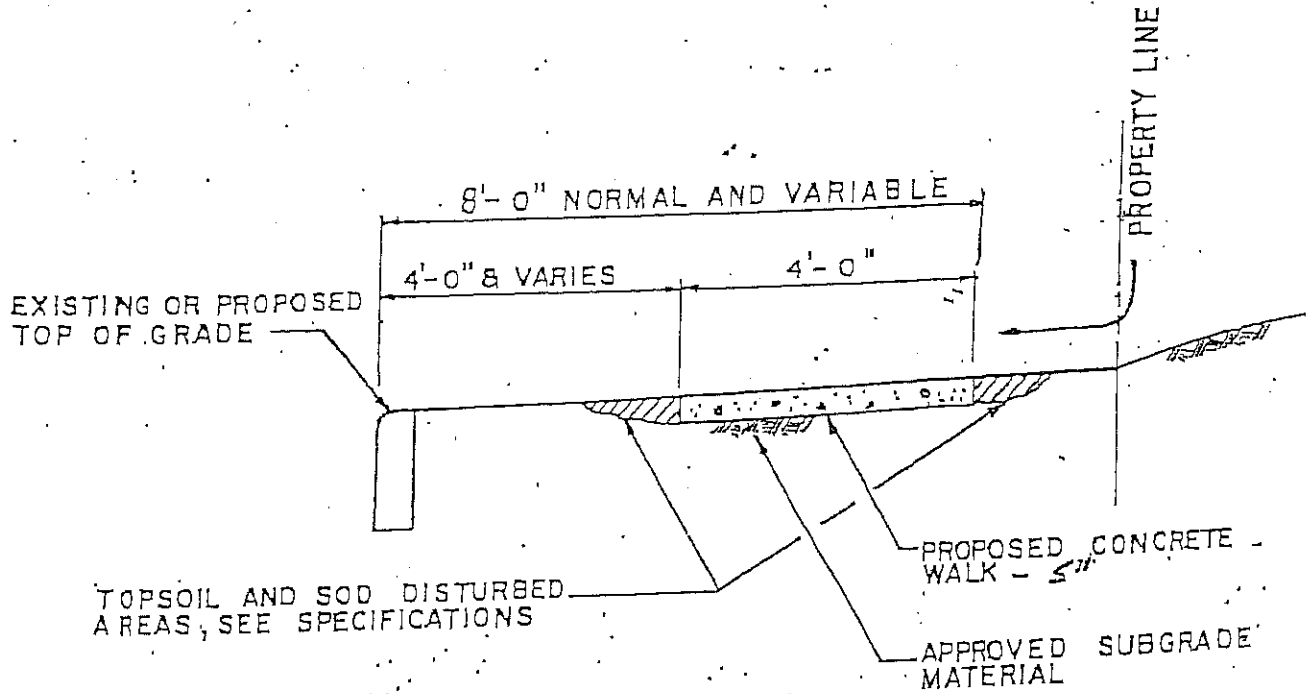
Thomas J. Rini
Superintendent of Public Works
(516) 746-0753



DETAILS OF CONCRETE CURB
AND WALK COMBINATION

Incorporated Village of Mineola
Department of Public Works

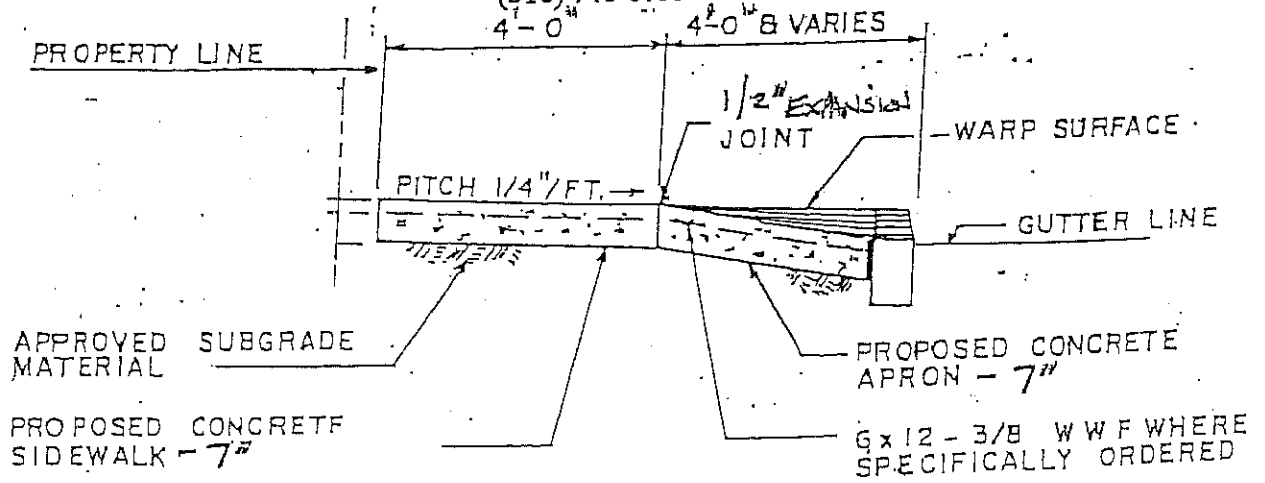
Thomas J. Rini
Superintendent of Public Works
(516) 746-0753



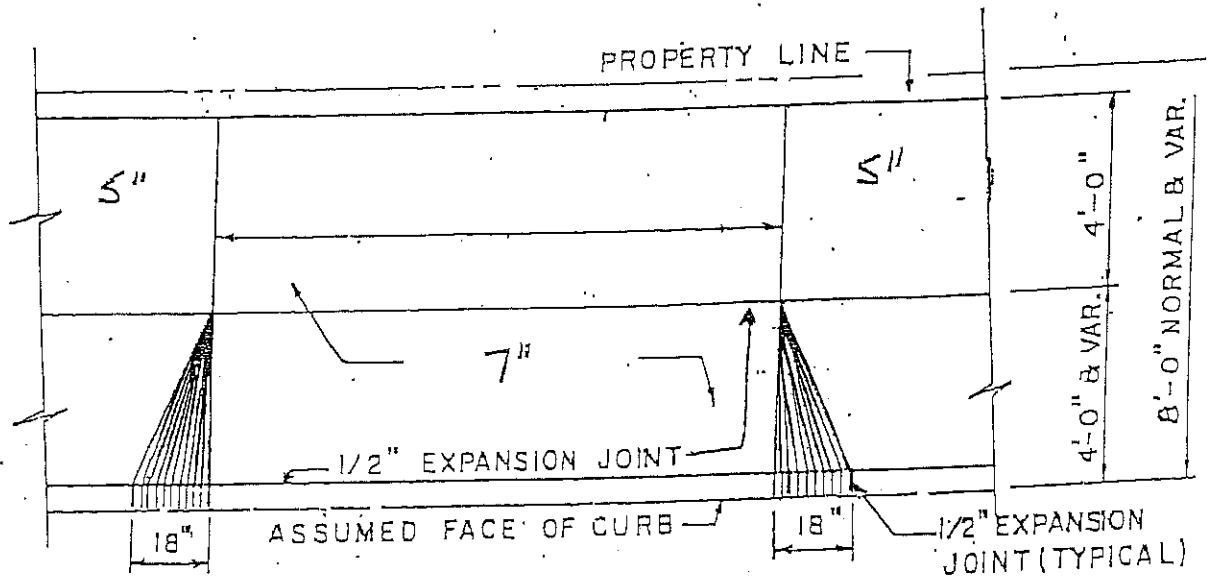
DETAILS
OF CONCRETE SIDEWALK

Incorporated Village of Mineola
Department of Public Works

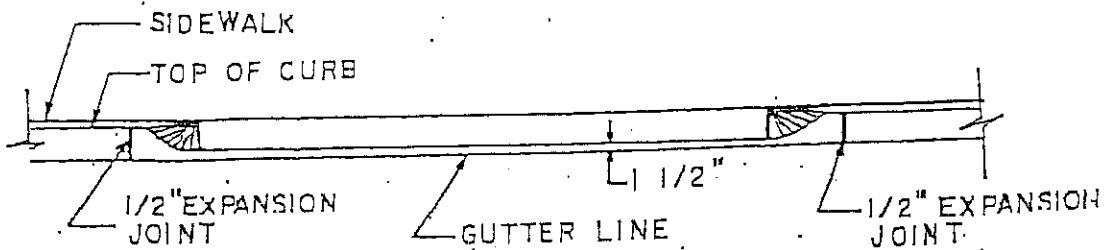
Thomas J. Rini
Superintendent of Public Works
(516) 746-0753



PLAN



PLAN



ELEVATION

DETAILS OF SIDEWALKS ACROSS DRIVEWAYS AND DRIVEWAY APRONS